

TYPICAL 25-UNIT BUILDING

SITE INFORMATION

10 RESIDENTIAL BUILDINGS
250 UNITS
-58% 1 BR
-40% 2 BR
-2% 3 BR
AVERAGE UNITS SIZE= 961 S.F.

SITE AREA- 12.61 ACRES
19.8 DU/ACRE

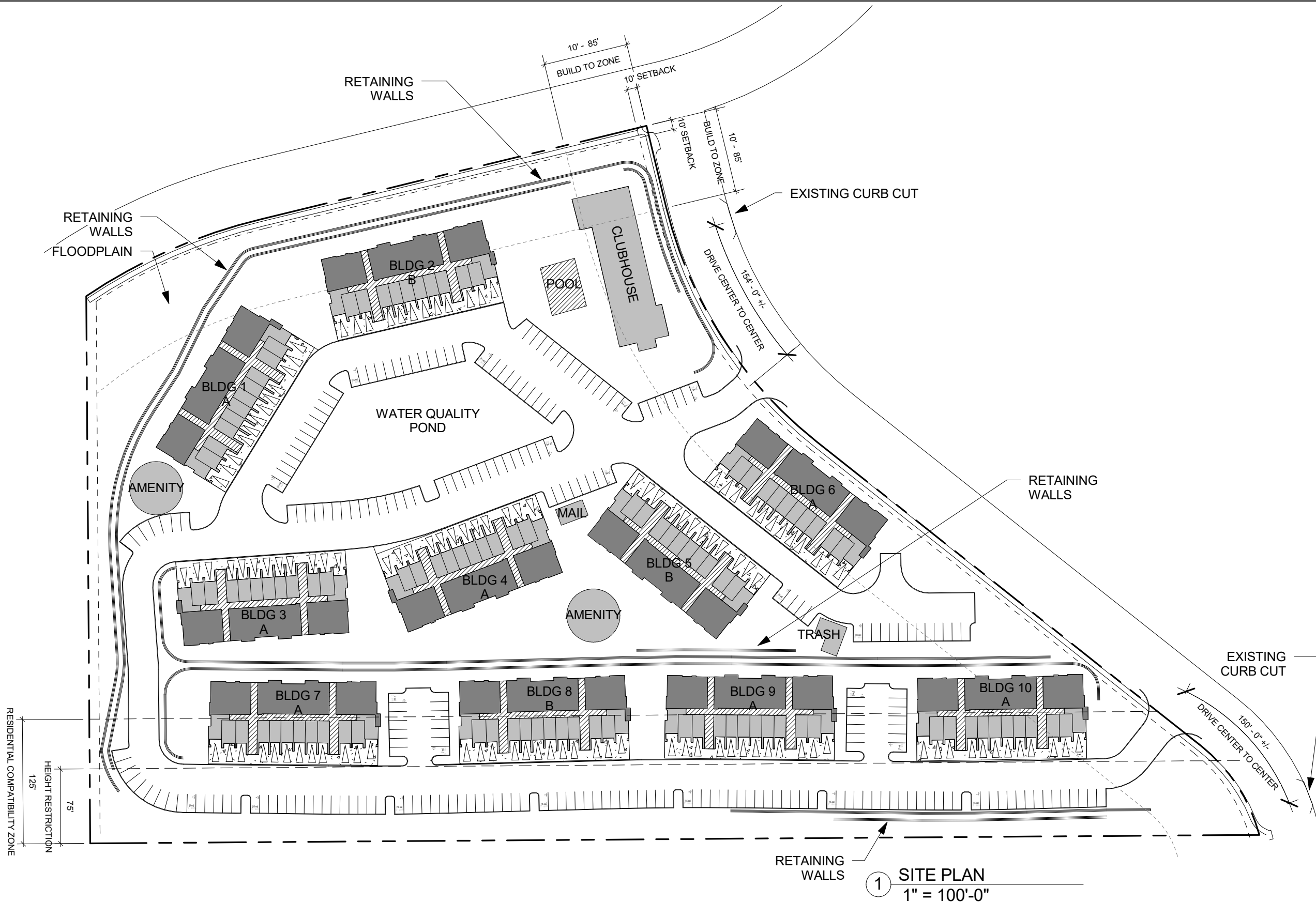
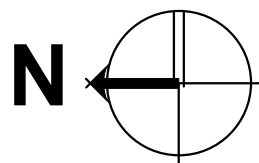
BUILD-TO REQUIREMENTS
40% ON MISSISSIPPI CT.
-REQUIRED: 388'
-PROVIDED: 471' (48%)
40% ON OHIO AVE.
-REQUIRED: 234'
-PROVIDED: 246' (42%)

OPEN SPACE
20% REQUIRED (109,849 S.F.)
50% PROVIDED (275,495 S.F.)

PARKING RATIO

GARAGE & TANDEM= 240
SURFACE= 246

TOTAL PROVIDED= 486
(1.94 PER UNIT)



1 SITE PLAN
1" = 100'-0"

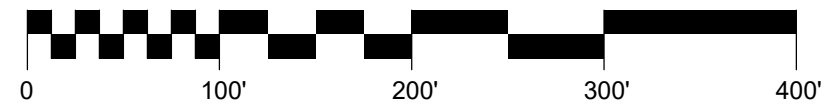
studio PBA ARCHITECTURE & PLANNING
1575 Gilpin Street Denver, CO 80218
PH: 303-592-9904 FX: 303-592-9387
www.studiopba.com

Wood Partners

ALTA Green Mountain

12/27/16

Graphic Scale: 1 inch = 100 feet

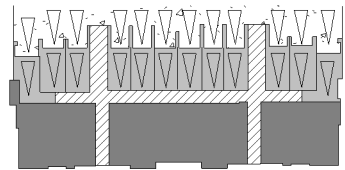


SITE PLAN

1" = 100'-0"

C:\Users\dzamora\Documents\ALTA Green Mountain - COPY 12.15.16_dzamora.rvt

12/27/2016 11:08:46 AM
COPYRIGHT © 2013 PAUL T. BERGNER, AIA, ARCHITECT, PC/ALL RIGHTS RESERVED



TYPICAL 25-UNIT BUILDING

SITE INFORMATION

10 RESIDENTIAL BUILDINGS
250 UNITS
-58% 1 BR
-40% 2 BR
-2% 3 BR
AVERAGE UNITS SIZE= 961 S.F.

SITE AREA- 12.61 ACRES
19.8 DU/ACRE

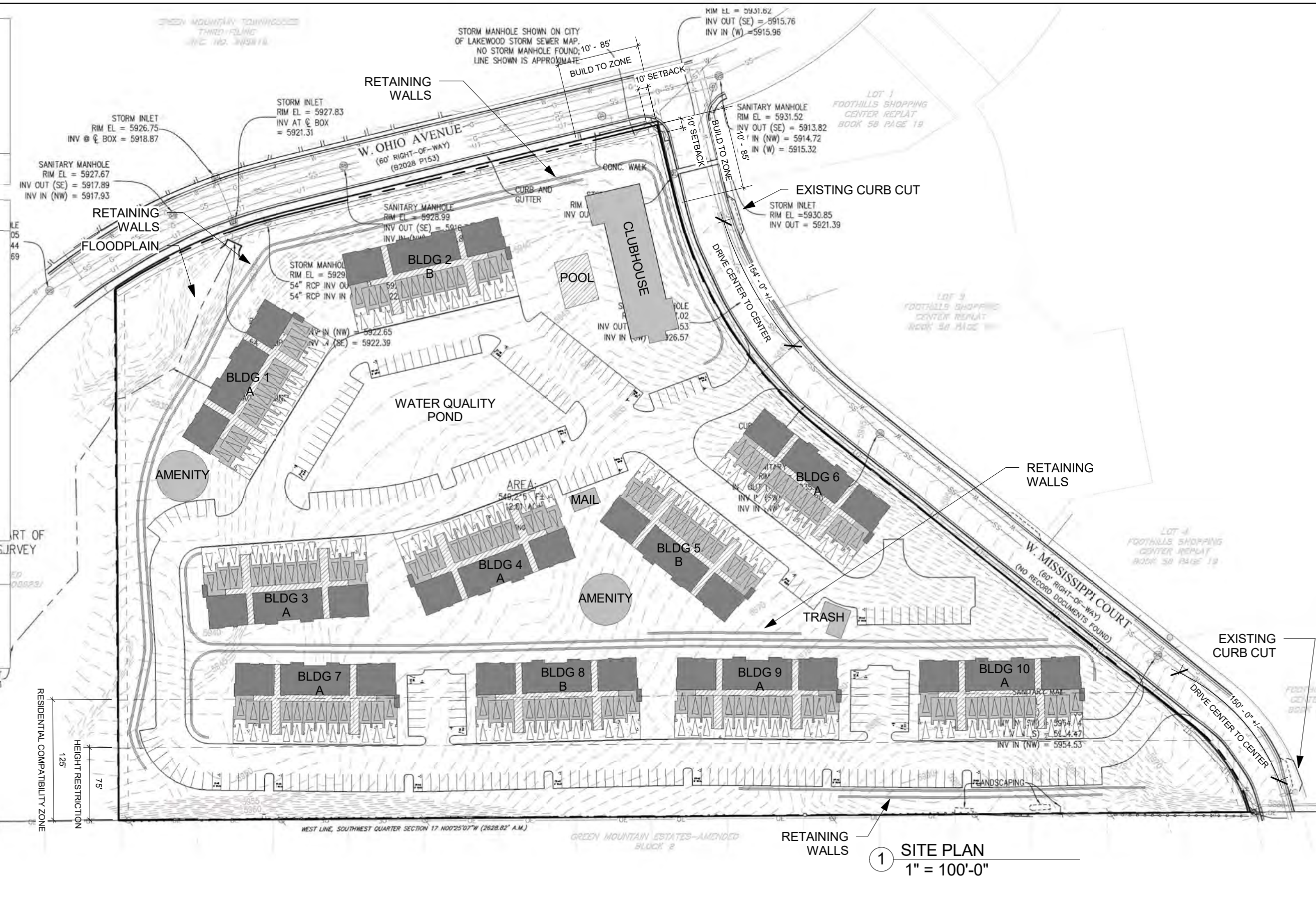
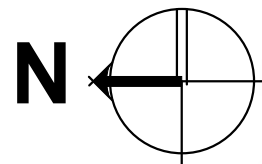
BUILD-TO REQUIREMENTS
40% ON MISSISSIPPI CT.
-REQUIRED: 388'
-PROVIDED: 471' (48%)
40% ON OHIO AVE.
-REQUIRED: 234'
-PROVIDED: 246' (42%)

OPEN SPACE
20% REQUIRED (109,849 S.F.)
50% PROVIDED (275,495 S.F.)

PARKING RATIO

GARAGE & TANDEM= 240
SURFACE= 246

TOTAL PROVIDED= 486
(1.94 PER UNIT)



1 SITE PLAN
1" = 100'-0"

studio PBA ARCHITECTURE & PLANNING
1575 Glavin Street Denver, CO 80218
PH: 303-592-9904 FX: 303-592-9387
www.studiopba.com

Wood Partners

ALTA Green Mountain

12/27/16

Graphic Scale: 1 inch = 100 feet

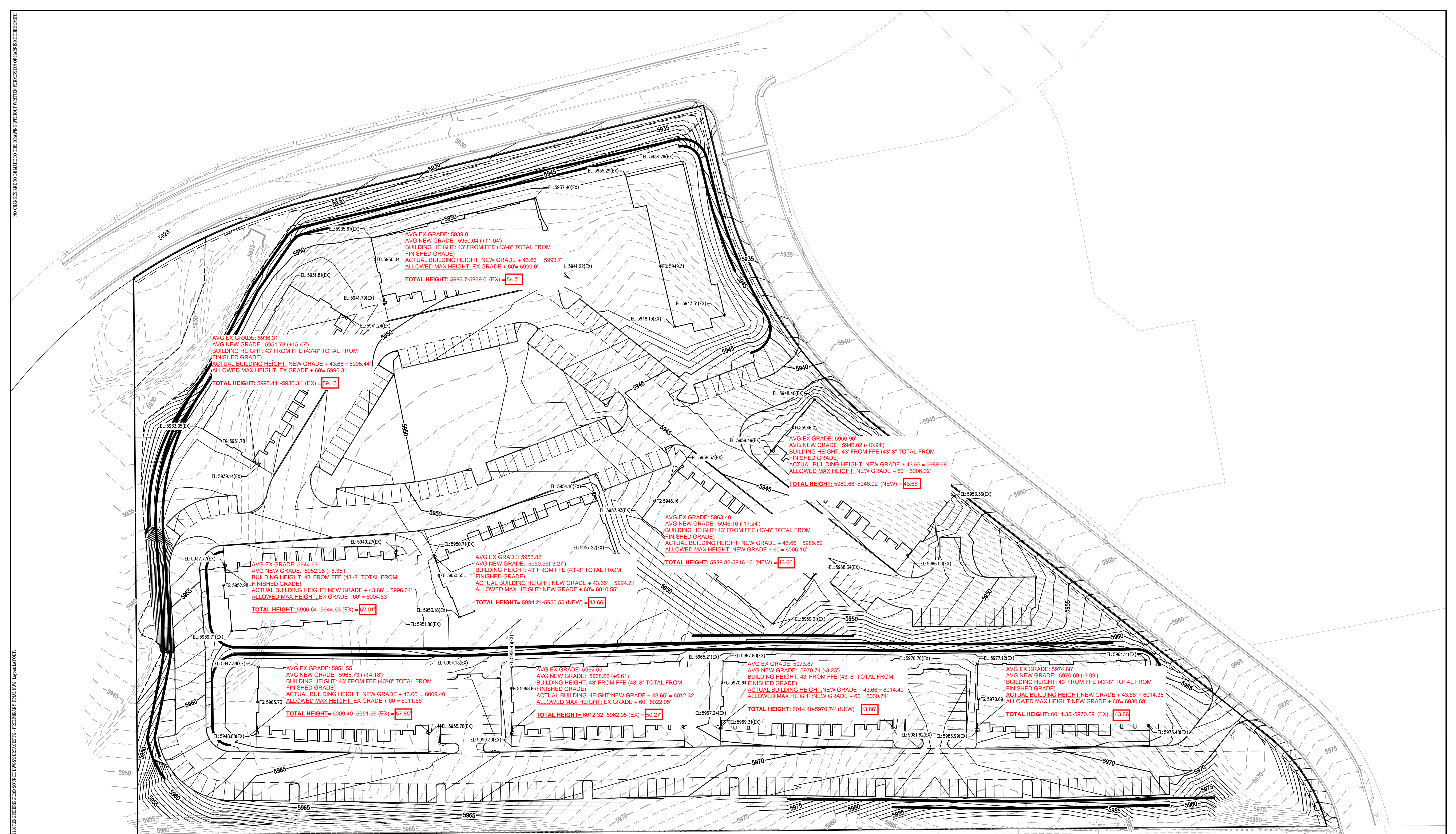


SITE PLAN

1" = 100'-0"

C:\Users\ldzamorad\Documents\ALTA Green Mountain - COPY 12.15.16_dzamorad.rvt

12/27/2016 11:16:53 AM
COPYRIGHT © 2013 PAUL T. BERGNER, AIA, ARCHITECT. PC/ALL RIGHTS RESERVED



Prepared by: HARRIS KOCHER SMITH
 Checked by: HARRIS KOCHER SMITH
 Drawn by: HARRIS KOCHER SMITH
 Date: 12/27/2016